



## **Beginners guide to exhibiting at Loughton Horticultural Show 2023**

Most allotment holders grow their produce to eat, enjoy the fresh air, exercise and to admire their plots. Showing their produce is a side-line which Loughton Town Council would like its plot holders to participate in more freely. Perhaps the fear of competition and nervousness about the quality of your produce maybe reasons why people decide not to enter. But this is the wrong attitude. We want to change this, you will be safe in the knowledge that you are competing against many other first-timers. This is a learning journey, not a chore, and most of all it is a sociable and fun experience.

***The more entries the better the show!!!***

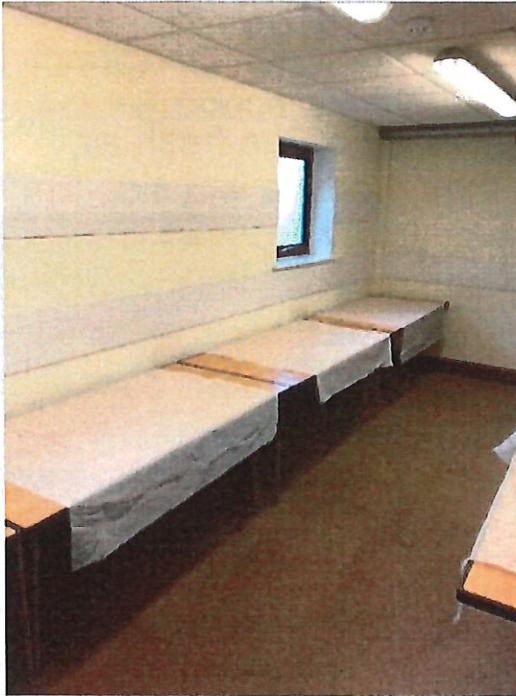
First thing is to read the "Rules, Regulations & Entry form" **carefully**. Note if it says display on a white surface, you will be marked down if you don't. Decide what Classes you want to enter. Complete the Show Entry Form, this needs to be submitted no later than 12 noon on Friday 1 September 2023, bring it to the Town Council Offices – 1 Buckingham Court, Rectory Lane Loughton IG10 2QZ along with your entrance fee of 50p per class.





## On the day

When you arrive you will need to collect your exhibitor cards from the foyer. You can then make your way to the prep room, if you need to use it.



### Prep room

This room is where you can bring your exhibits and unpack and arrange them appropriately before laying them on the display tables. Good staging and preparation makes all the difference. Paper plates are ideal.

## Display your entry

Alternatively you can go straight to the main hall where the exhibition tables will be labelled with the Class numbers, find the class you wish to enter and lay your entry next to the correct class label along with your entry card, make sure your name is face down. You can arrive with your exhibits between 9am and 11am note exhibits must be staged by 11am at this time everyone has to leave the hall as judging will then take place.





## Judging



At 11am the doors will close and only the judges and stewards are then allowed into the hall. As the judges view the entries their comments will be written on the entry card which is a useful learning aid to get their feedback.

## The Show

From 2pm to 4pm the show takes place. This is your opportunity to look around at the whole show, stickers for first, second and third place are displayed on the entry cards and at this point you can read the judges comments. Refreshments are available and an opportunity sit and talk to other exhibitors and visitors. There is an opportunity to purchase plants from Matthews Plants. At 3.30pm the Best in Show will be announced. Last year it was Freddie Sheridan for his Bug Hotel. At 4pm The Town Mayor's Best Allotment Awards are presented, you are welcome to stay and watch them receive their prizes.





## Top tips

Produce for exhibiting should be fresh, tender and ideal for the kitchen. Where a number of vegetables or fruit are to be exhibited in a particular class, each item should as far as possible, be of the same size and quality. Uniformity is probably the most important aspect. Produce should be free of pests, slug damage and cleaned.



## Flowers

In general flowers will be judged on quality of bloom, stems and foliage. Pick and leave the stems as long as possible they can always be cut later. Vases of different sizes are provided by Loughton Town Council if required but you can bring your own. Bring newspaper to help with presentation, wet the paper and pack it into the vase to keep the stems in the position you want them.

Always remember if you need help on presentation then the stewards are available on the show day and are there to assist. Comments from the judges will be written on the back of your entry card which is placed next to your entry.



***It's not as scary as you think have a go!***