



RECREATION COMMITTEE

Members of the Recreation Committee

are summoned to attend a Meeting

**which is to be held by ZOOM (digital meeting platform)
on Wednesday 3 March 2021 at 7.15pm**

to transact the business shown in the agenda.

Mark Squire

Town Clerk

24 February 2021

Membership:

Councillor D Wixley (Chairman)

Councillor A Omer (Vice Chairman)

R Brookes
S Murray

Councillors
B Cohen
M Stubbings

J Jogia

Note to Councillors:

If you are unable to attend the meeting,
please phone your apologies to the office on 020 8508 4200
Zoom-code and password can be obtained from the Town Clerk.

AGENDA

- 1 Apologies**
To RECEIVE any apologies for absence.
- 2 Declarations of Interest**
Councillors to declare any pecuniary or non-pecuniary interest in any items on the Agenda.
- 3 Confirmation of Minutes**
To CONFIRM the minutes of the meeting held on 6 January 2021.
- 4 Public Representations**
To hear any representations from members of the public who have registered a request to address the Committee in accordance with no 5, Appendix C, of the Standing Orders.
- 5 South Loughton Cricket Club (SLCC) / Loughton Athletic Club (LAC)**
SLCC has written to the Town Council on 31 January 2021 regarding the problems caused by frequent flooding when the River Roding bursts its banks. It does not appear viable or practical for the club to remain on the existing site on the current basis. Correspondence has also been received from LAC regarding the poor state of their existing club house. There may be a case for LAC to share a clubhouse with SLCC. See correspondence, map and report attached, pages 5 – 10.

The Chairmen of both SLCC and LAC have been invited to participate in this agenda item.

Members to review and recommend a way forward to support both sporting clubs.
- 6 Town Clerk's / Chairman's Report**
To report (for discussion only) on any further significant information / matters that may be of interest to Committee members.
- 7 Roding Valley Recreation Ground - Planting Scheme and Footpaths - Min no RC215**
Trevor Baker, Principal Engineer, Environmental Protection & Drainage, Contracts & Technical Services, Epping Forest District Council (EFDC) has provided an update regarding the diversions of the 3 path sections by Charlie Moules Bridge, South Loughton Cricket Club and south of Loughton Brook. EFDC are hopeful that they will have a modicum of a start by the end of March 2021, (ground conditions permitting). They do not want to wreck the field just to get work underway though, so if the weather turns or using some sort of temporary boarding etc isn't feasible then EFDC may well have to postpone again. Tree planting by April 2021 is targeted although mindful that newly planted trees will need nurturing over the summer months in the dry season.
- 8 Roding Valley Recreation Ground – Drainage Works – Min no RC216**
Again this work is dependent on weather / level of ground saturation.
Members to receive and note.
See attached report, photos map, pages 11 – 16.

**9 Roding Valley Recreation Ground - Football Changing Room / Car Park Gates
Min no RC217 & RC218**

In lieu of the strain on the Town Council's finances caused by the Covid pandemic, the planned major refurbishment of the football changing rooms has been deferred for the foreseeable future. Subsequently the Architect, Funding Consultant and other interested parties have been informed.

Initial quotes for the potential basic work for the electrical wiring and plumbing overhaul for the changing room appear to be prohibitive. Some 'ballpark' costings will be available at the meeting.

Similarly the Services Manager will have an additional costing for the gate available at the meeting. A third contractor had been approached but did not provide a quote. The Town Clerk and Services Manager will provide updates.

After reviewing the anticipated costs, Members need to consider whether

- a) it is financially feasible to cover the changing room and car park projects at the same time
- b) to concentrate in the short term on one project only, i.e. car park or changing room
- c) to dissect further and work on car park gate first, then car park surface/layout and then changing room.

The Town Clerk recommends option c, as the budget available can be reviewed on an ongoing basis.

Members to recommend the way forward.

10 Roding Valley Recreation Ground - Playground – Min no RC219

The Services Manager has arranged to meet with the playground consultant, on 16 March 2021, to inspect the favoured area for the re-location of the playground, adjacent to the tennis courts. A report will be made to the committee at a subsequent meeting.

11 Roding Valley Recreation Ground – New benches - Min no 221

An order has been placed for two new metal benches to replace the recently fire damaged benches close to the lake. No further benches were forthcoming from EFDC.

12 Roding Valley Recreation Ground – Noticeboard

The vandalism to the noticeboard (near Greensted Road) is being followed up via our insurance company and also through Essex Police, where we have an allocated crime number reference. The Town Clerk will provide an oral update.

13 Roding Valley Recreation Ground – Football Pitches – Min no RC220

A request has been made by a regular football hirer for the football pitches to be made available until late June 2021, to allow for the completion of the 2020/21 league season. Football traditionally ends no later than the middle of May, and the extension is entirely connected to the cancellation due to the Coronavirus Pandemic. The Committee is asked to consider the request.

To note that the same position as last season is now being reached. Due to a combination of the Covid pandemic and waterlogged pitches, LTC will need to make full and partial refunds to the regular pitch hirers.

- 14 Roding Valley Recreation Ground – Quagmire areas**
- (i) Land strip behind the lake and adjacent to the River Roding**
As neither Chigwell Parish Council nor Buckhurst Hill Parish Council are parties to the lease with EFDC, any further action should be pursued with EFDC. The Services Manager is currently in discussion with the EFDC Grounds Maintenance Officers regarding this issue; a verbal report will be made to the Committee.
- (ii) Access point from the footpath linking Avondale Drive/Avondale Close to Greensted Road**
The Services Manager will make a verbal report to the Committee.
- 15 Accumulation of waste by Loughton Brook at the rear of Broomfield Avenue garages**
EFDC have reported this dumping of waste to the Environment Agency and are awaiting a response.
- 16 Murray Hall – Min no RC222**
To note that the NHS are in full possession of the Hall. It is understood that the opening of the vaccination centre has now been put back to 10 March 2021.
- 17 Hillyfields**
- 17.1 Hillyfields Open Space Flood Alleviation Scheme - Min no RC 204**
LTC, EFDC and now the City of London Corporation continue to chase Essex County Council (ECC) for their contractors to complete the remedial work, principally to replace the drainage grate and to fill in the large cracks/ holes on the surrounding bunds.
Now that the weather is improving an on-site meeting will take place with EFDC Officers regarding the necessary grass re-instatement works to the outer areas. Advice will be sought as to what is practical and cost effective to improve the landscaping of the area.
- 17.2 Hillyfields Litter Bins**
The Services Manager has secured all relevant costings for the supply and installation of litter bins,(which will be available at the meeting). However the weekly charge of emptying the bins is still awaited from EFDC. The Committee is asked to consider whether it wishes to proceed with this matter, and if so, to confirm the number of litter bins required.
- 18 Woodland Trust – Min no RC200.10**
The Services Manager collected two packs of trees, donated free by the Woodland Trust from its depot in Takeley, Essex. The requisite amount of tree stakes and guards were also collected. It had been hoped to add the trees to the Roding Valley Recreation Ground planting scheme but the delay of this project has meant that an alternative location is required. The Committee is asked to agree on a suitable location.
- 19 Financial Position**
The current financial position is attached together with details of the funds available from earmarked reserves (see pages 17 - 18).
- 20 Future Work of the Committee**
The opportunity for members to suggest topics to be considered by the Committee at a future meeting, subject to the Committee's agreement.

Note: No substantive discussion may take place under this item as the required statutory notice of the topics will not have been given.

21 Kingsley Hall - Min no RC223

On larger building projects, in order to claim back VAT, the VAT received on income generated activities, must not exceed £7,500 p.a. (known as the 'de-minimis' limit). Final checks are being made with our VAT experts DCK Accounting Solutions. It is unlikely that just progressing this small project would cause a de minimis breach.

To receive and note.

22 Exclusion of the Press and Public

The Committee is asked to RESOLVE to exclude the press and public from the following item in accordance with the Public Bodies (Admission to Meetings) Act 1960, as they contain confidential information relating to contractual matters.

23 Kingsley Hall tender report - Min no RC223

Members are requested to review the tender report provide by the external consultant 'Barker Associates' and recommend a contractor to complete the window replacement works.

**Mark Squire
TOWN CLERK
24 February 2021**

AGENDA ITEM 5

South Loughton Cricket Club (SLCC) / Loughton Athletic Club (LAC)

- Andrew Shields(Chairman SLCC) has submitted the attached letter and report dated 31 January 2021 regarding the current flooding situation on Roding Valley Recreation Ground and ongoing impact to SLCC. He welcomes the opportunity to open dialogue with Loughton Town Council (LTC). Relevant stakeholders (see below) have also been copied in
- Duncan Jenkinson, England & Wales Cricket Board.
- Dan Feist and Graham Pryke, Essex County Cricket Board
- Bob Glasgow, Loughton Parkrun
- Peter Jones, President, South Loughton Cricket Club

General points

It would seem that climate change may be impacting therefore increased frequency and severity of flooding is unlikely to revert to previously acceptable levels. This is the fifth time that the clubhouse has been flooded since the beginning of October 2020 and the water table is so high that even a small shower brings the level up again.

Some additional suggestions for discussion

- A practical solution may be to re-locate albeit with the cost of having to build a new pavilion and create a new cricket table.
- To re-locate further away from the river adjacent to the tennis courts for example. This would mean sacrificing one football pitch but perhaps LTC could manage with the reduction of one pitch?
- To consider a pitch on top of the mound, between the tennis courts and the football changing rooms. Sufficient diameter for the outfield are? Perhaps if not far off the required size it could be extended by the importation of earth? An advantage of that site could be that SLCC could make use of the existing football changing rooms, although at present LTC has had to put on hold its plans for a major refurbishment and may concentrate fixing the plumbing and electrics (to be discussed). If that work can be completed and the changing rooms made usable they could be a stop gap measure until you got a new pavilion should you SLCC have such ambitions. This is thinking into the future as it is unlikely anything could be done in time for the coming season.
- Other fields on the LTC's section of the Roding Valley Recreation Ground could be looked at i.e.the field behind Greensted Road and the field behind Avondale Drive which once had two cricket pitches on it.
- A link up with Roding Valley High School may be a good solution if the school was prepared to enter into such an arrangement.
- A temporary solution to the flooding of the pavilion could be to construct an earth bund around it. Subject to approval by LTC and EFDC.
- Linking resources with LAC – see correspondence below.

Hi Mark.

I hope that you and your family, and the staff at Loughton Town Council, are well.

I thought it was appropriate to get in touch again as I have recently been in touch with Andrew Shields from South Loughton Cricket Club. I was passed a letter from him, to the council, regarding the flooding on the recreation ground and how the increased frequency of flooding was causing them severe difficulties.

I contacted Andrew to offer any short-term help that we could, but also to advise him that our clubhouse was not in the best state of repair and that we had already had discussions about repairing and upgrading it. I said that we would be quite amenable in entering in to some sort of joint arrangement, in order to improve the facilities for everyone.

We have still not made much progress at our end. When we were allowed to re-start training sessions, we took the decision to keep the clubhouse closed, except for essential use (storage of equipment, provision of temporary lighting outside etc). Trying to organise training sessions with constantly changing regulations proved to very time-consuming, and the clubhouse became a secondary priority. However, hopefully we will be able to have sessions again soon and possibly back to near-normal before too long, so this is becoming significant again.

My view is that we will only do some essential repairs in the short-term while we explore the possibilities of joint facilities. I'm know that many on the committee are keen to explore the possibility of developing improved joint facilities, but the exact approach will be discussed at a committee meeting next week.

We're all hoping that we'll be able to use the clubhouse more this year!

Best wishes

Tony Maycraft
Chair, Loughton Athletic Club

MS



SOUTH LOUGHTON CRICKET CLUB

Founded 1938

*Affiliated to the Club Cricket Conference,
Metropolitan Essex District Cricket Board, Essex County Cricket Board
and the England & Wales Cricket Board*

MEMBER OF THE T RIPPON MID-ESSEX CRICKET LEAGUE

Ground: Roding Road, Loughton, Essex Club colours: Pale blue and gold

www.southloughton.org.uk @southloughtoncc

31 January 2021

Dear Mark and David

As I write, South Loughton Cricket Club's ground and pavilion is flooded for the fourth time this winter.

For the first 70 years of the club's existence, flooding was a relatively occasional inconvenience. The River Roding tended to burst its banks and flood our ground every 1-2 years, with the pavilion flooding every 4-5 years. From around 2000 the problem became more serious. It has now become acute.

The volatility of the river, where the level can rise 1.2 metres and more after a day of steady but not excessive rain, means that almost every flood episode now inundates our pavilion as well as our ground – despite our pavilion being located some 200 metres from the river. This change in frequency has certainly occurred within the last decade.

As a result, we are a thriving, successful, solvent, highly regarded community sports club now hamstrung by our location. The continual inundations on the Roding Valley Recreation Ground are having an increasingly detrimental impact on our facilities.

In writing this detailed letter and report, we acknowledge that no simple, or single, solution exists to the issues outlined below. The impact of the global climate crisis and UK waterways management are beyond the remit of Loughton Town Council; we also fully accept that protection of houses and businesses must take priority in any flood mitigation measures. That said, we wish to make known the extremely worrying situation in which we find ourselves and identify some areas where you may be able to offer support.

RECENT BACKGROUND

Following extended flooding episodes during the winter of 2019-20, the club was supported by Sport England and the England & Wales Cricket Board (ECB) to remediate the damage caused to our cricket square and outfield and to replace the doors, furniture, fridges, and other items that had been irretrievably damaged inside our pavilion. In addition to around £9,000 of external assistance received, the club also made a significant financial contribution and contributed more than 300 hours of volunteer effort.

Our ground maintenance equipment, worth well in excess of £10,000, is stored in secure containers but these are now also increasingly vulnerable to water inundation.

It is already clear that the remedial work of last winter will be completely undone by this winter's flooding. As a result, further expenditure and volunteer labour over and above what is ordinarily required to play cricket will be needed in order to be ready for the new season, due to start in mid-April. Pandemic countermeasures will no doubt add an additional burden.

Flood mitigation measures for the Roding beyond the M25 are due to be submitted for planning approval later this year. The Environment Agency has advised that these will not have any beneficial impact on our location.

STATEMENT OF POSITION

As a consequence of the above, the inevitability of future severe flooding episodes has forced us to recognise that it may now be unsustainable for the club to remain at our current site. The ever increasing amount of human and financial resource needed simply to maintain our current position, let alone develop and move forward, is not practicable.

I am writing to inform you and members of the Recreation Committee of the options we are exploring and actions so far undertaken, and to open a discussion about the future viability of sporting and other activities on a designated – and, indeed, award-winning – recreation ground that for extended periods every year now has significant sections unfit for that purpose.

We note the Council's decision to relocate the children's playground from the field adjoining our ground in recognition of the impact of sustained flooding episodes.

USER SAFETY

An impact of sustained winter flooding followed by hot summer weather is to cause surface areas within the recreation ground to 'heave' and crack. An area where this has occurred lies within our cricket outfield.

Last summer, a cricketer was taken to hospital when a ball ricocheted from one of these cracks and hit him in the face. We understand from Paul Hoy that some Council-managed football pitches are also affected.

This raises questions of legal liability should sports players, or members of the public, be injured as a result of such ground conditions. The damage also reduces the number of football pitches available for hire, thereby reducing potential income for the Council.

Last year a site survey was undertaken by an Essex County Cricket Board soil and turf advisor. The resulting report is available on request. However, implementing the recommended remedial measures at the appropriate time faces the risk of work undertaken simply being 'washed away'.

SPECIFIC IMPACTS

Cricket outfield: in addition to the impact outlined above, we have particular concerns over the area adjacent to our pavilion and between our square and the tree line along the field division. Last winter, this area was under standing water for more than three months, destroying the grass. The club

undertook reseeding at a cost of more than £1,000. It is extremely likely that this winter's flooding will necessitate the same work. The problem is exacerbated by people walking over the saturated areas, churning the surface into mud. We recognise that work to clear the adjacent ditch has currently been halted but the issue of poor drainage in this area is likely to remain.

- *We acknowledge that our outfield is part of public open space but ask whether it would be possible to rope off those areas most affected by standing water to try and reduce footfall. This would give the grass a better chance of recovering without the need for expensive and extensive reseeding.*

Cricket pavilion: The impact on our pavilion is now extreme. Other local clubs situated within the flood plain are advantaged by having raised pavilions; ours is entirely at ground level, therefore completely vulnerable to each flooding episode. Club cricket requires facilities offering hygiene (a kitchen for food preparation; clean changing rooms, toilets and showers), shelter from inclement weather, and hospitality. Together with elevation of our storage containers, the clubhouse at Buckhurst Hill Football Club is an example of how a pavilion purpose-designed and constructed to sit above the flood plain could enable our club to remain on its current site.

- *We would welcome an exploratory discussion on the feasibility of either raising our existing pavilion or, more realistically, constructing a replacement which would be more resilient to flooding.*

Cricket square: Thankfully this critical fine turf resource is relatively unaffected by flooding episodes. This gives us hope that if solutions could be found to the above issues, the club may be able to find a way to remain on its current site.

Other users: The club's facilities are used by a number of other organisations, including Scouts, primary schools (for organised competitions), informal running groups and Parkrun. The last-named stores equipment in one of our containers and is increasingly using our pavilion as an event management and post-run social space – a development we fully support. Parkrun is already seriously impacted by flooding episodes and would be further affected by any loss of resource provided by our club.

OPTIONS

The club has already considered the following options to secure its future:

1. Create a partnership with another sports club and develop cricket on that site. This option has been explored with Loughton Rugby Club, based in Buckhurst Way, Buckhurst Hill. The site could be reconfigured to enable cricket but the rugby club does not wish to enter into a partnership and would only consider a rental agreement. This would not give our club any security of tenure.

An ideal location would be Loughton Football Club, located in Avondale Close, Loughton. This site would require redevelopment, including the construction of a pavilion and infrastructure, but it would keep the club within its traditional vicinity. At the club's request, the ECB measured the site and it is sadly too small to consider: the potential boundary dimensions would only facilitate junior cricket.

2. Develop a cricket facility on a school site. Our club is located less than half a mile from Roding Valley High School, with whom we have enjoyed an occasional relationship (the school has no cricket tradition). The school has extensive and, it could be argued, under-utilised sports fields with little community use (its all-weather pitches, in contrast, are heavily used by the community). A partnership could be a potential source of revenue for the school and the facility could be designed for dual use during term-time. This option remains attractive though it presents challenges in terms of construction, funding and term-time access. The ECB has recommended that the club should make contact with the school to initiate a conversation.

3. Amalgamate with another club. Loughton is a sufficiently large town to support two all-age cricket clubs: the fact that it has done so for more than 80 years is proof of this. Loughton CC currently runs five adult teams and an extensive junior section, South Loughton CC runs four adult teams and also has an extensive junior section. The two clubs enable men and women, boys and girls of all backgrounds from the town and its vicinity to play cricket in well-run organisations at a level appropriate to their interest and ability. Merging South Loughton CC with Loughton CC (or another club further afield) would leave the enlarged organisation with the same problem of finding additional grounds on which to play.

4. Find an alternative site and relocate. This would almost certainly be the most costly option, given it would require sufficient space to lay a cricket square and outfield and the construction of a pavilion and associated infrastructure. However, external funding may be available to support such a venture and wider sporting and social provision could be built into a scheme. Also, a scheme could possibly be enabled through a Section 106 agreement.

- *We would welcome your support in identifying any current or future locations where this option could be explored.*

5. Remain at our current site. This is by far our preferred option. However, as outlined above, our ability to do so is increasingly precarious.

We greatly value our positive and constructive relationship with Loughton Town Council and ask that this letter is accepted in the spirit in which it is intended – as an opportunity to give a full account of the situation in which we find ourselves, to offer some possible interventions and to ask for your support in securing our future.

The climate crisis is the most pressing concern of our times and flooding is just one aspect. While we accept that Roding Valley Recreation Ground sits within a flood plain, we do not accept this as a reason not to consider the negative impacts on community organisations such as ourselves. The consequence of doing so could be the loss of one of the town's most inspirational, popular and successful sports clubs.

Yours sincerely

Andrew Shields
Chairman, South Loughton Cricket Club

Agenda item 8

Roding Valley Recreation Ground – Drainage Works – Min no RC216

Prior to the outset of the bad winter weather, Trevor Baker, EFDC provided the following information after meeting with the contractors Hugh Pearl Land Drainage Ltd (Pearl) – summarized below:

As mentioned, post the initial works the other week, I'd like to propose the following to help alleviate the ponding on the grass to the west of the playground.

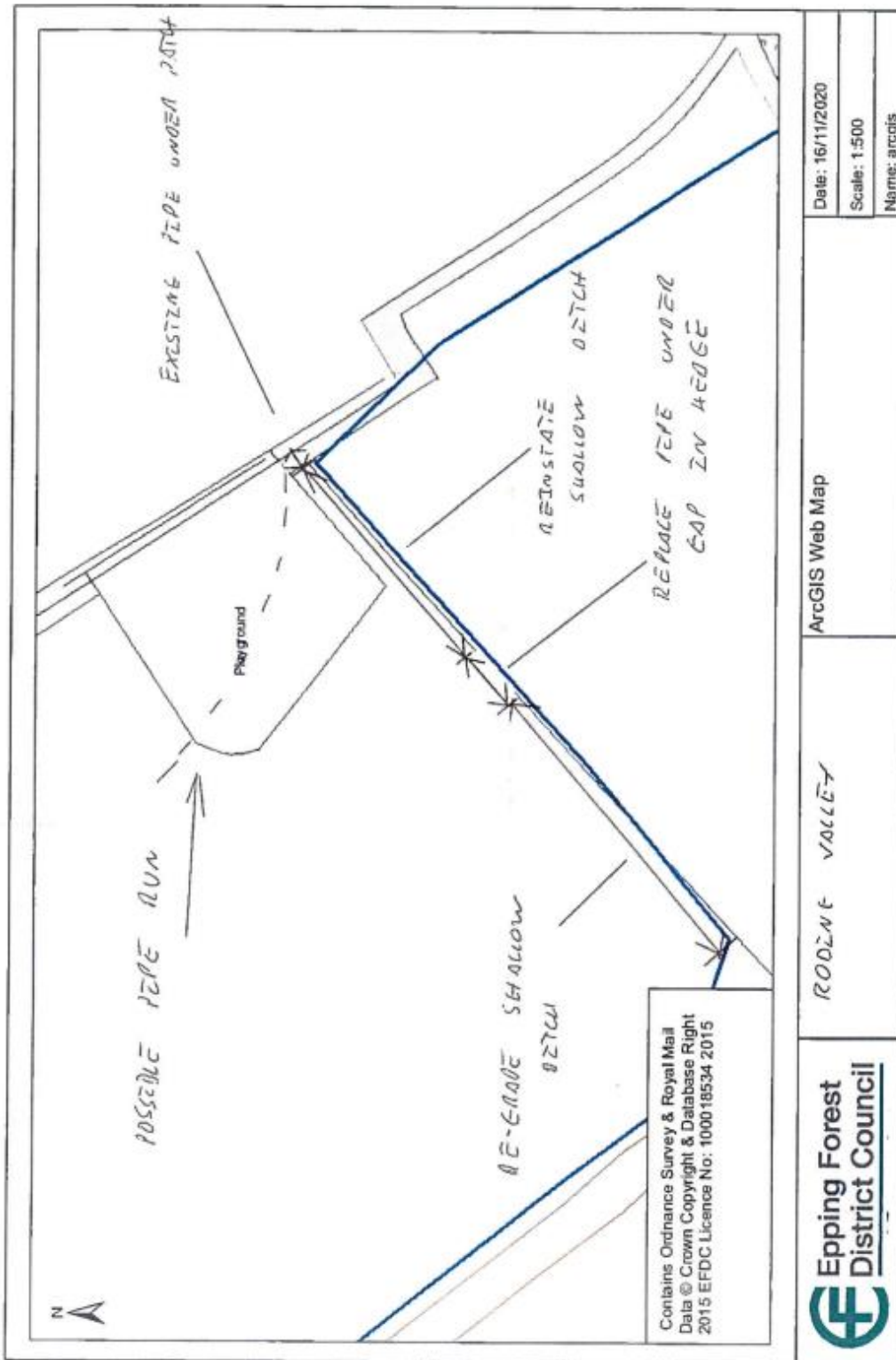
- As we have located a shallow pipe underneath the path, we re-instate what I think was an old ditch line that used to exist between the playground fence and the hedge line. We've got it mapped on the mapping layer we have for watercourses. This reinstated section would be quite shallow but it would mean that people would not really be able to walk along there anymore.
- We then install a new 7m section of pipe under the gap in the hedge to link up with the existing shallow ditch on the west side.
- Re-grade as necessary the existing shallow ditch.

As the pipe under the path is so shallow we are governed by its invert hence there won't be much fall west to east along the new ditch and I doubt that all of the water holding in the existing ditch will be able to flow fully away. We could lower the pipe under the path but we wouldn't gain a lot given that the ditch it connects to is shallow in itself. The cost of the above will be broadly what I said previously but I'll cover some of it via the EFDC budget for ditch works on the Recreation Ground.

In terms of what the gang also found on the first visit, they are rodding the pipe from the ditch end and managed to get about 20 odd lengths through it but clearly it wasn't heading along the ditch line as the pipe stopped after the path. We think that it runs under the playground somewhere as I've roughly indicated on the plan.

Pearl will be undertaking the work when the area dries out.

MS

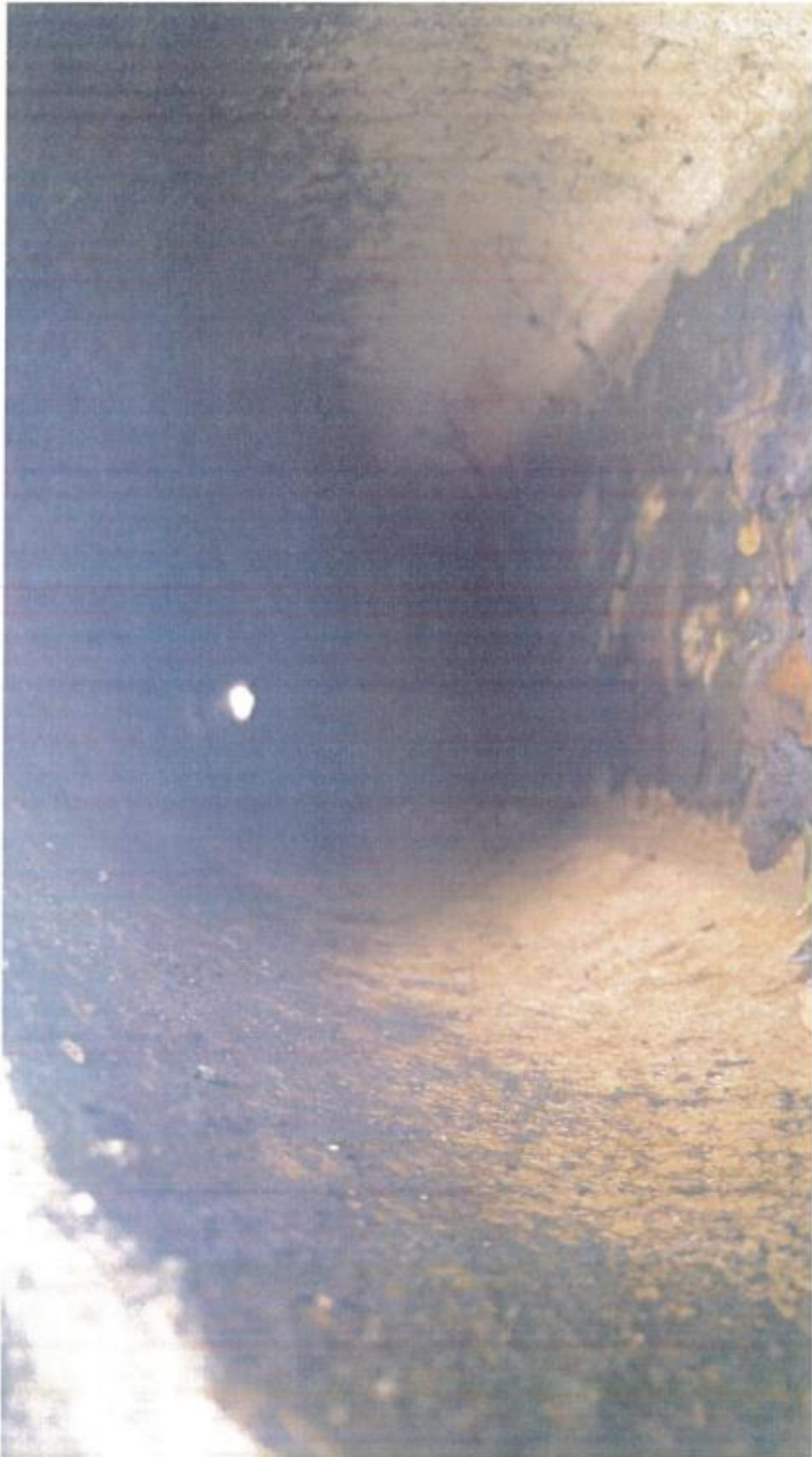


Roding Valley Rec adjacent to playground, Friday 13th November.

Looking southwest at the shallow pipe under the footpath. Low flow coming from the pipe but higher flow evident coming through the cut to the right of the pipe.



Looking through the pipe from the same point as above. It is broadly clear.



Looking southwest along where I proposed to reinstate what I believe was once an open ditch. The barrier in the foreground is covering a small hole that was dug to expose the other end of the pipe. New pipe to be laid across the gap in the hedge in the background.



View of the pooling on the north side of the playground



Agenda item 19
Financial Position

Loughton Town Council
Summary Income & Expenditure by Budget Heading 01/01/2021
Month no 9

Recreation Committee Report

		Actual Last Year	Actual Year To Date	Current Annual Budget	Variance Annual Total	Funds Available	% of Budget
Recreation							
Kingsley Hall	Expenditure	22,110	7,909	18,752	10,843	10,843	42.2%
(1)	Income	39,941	18,263	41,000	22,737		44.5%
The Murray Hall	Expenditure	141,134	107,272	134,265	26,993	26,993	79.9%
(2)	Income	82,157	40,753	78,800	38,047		51.7%
Other Services (Rec)	(3) Expenditure	5,867	1,074	11,250	11,250	10,176	9.5%
Service Re-Charge	(4) Expenditure	146,000	0	146,000	146,000	146,000	0.0%
Roding Valley Recreation Ground	(5) Expenditure	127,901	22,778	148,845	126,067	126,067	15.3%
(6)	Income	10,329	6,038	10,645	4,607		56.7%
Open Spaces	(7) Expenditure	27,722	8,359	25,750	17,391	17,391	32.5%
(6)	Income	235	0	0	0	0	0%
Playgrounds	Expenditure	23,187	10,767	49,960	39,193	39,193	21.6%
Will. Rd. Playing Field	Expenditure	14,540	8,272	21,232	12,960	12,960	39%
(6*)	Income	1,233	128	1,150	1,022	0	11.1%

INCOME – EXPENDITURE TOTALS

Recreation Expenditure	508,461	158,840	410,054	251,214	251,214	38.7%
Income	133,896	65,183	131,595	66,214	0	49.5%
Net Expenditure over Income	374,565	92,574	278,459	185,885	0	0

Notes:

- 1) Kingsley Hall income is much lower than normal for this time of year due to Covid 19 closure.
- 2) The Murray Hall income is much lower than usual for this time of year due to Covid 19 closure. The Council has agreed to hire the hall out to the NHS from March 2021. However a refund of c£19k will be made to the City College soon, as they paid in advance for their cancelled bookings.
- 3) Other Services budget includes £10,000 for community events, £250 for defibrillators and £1,000 contingency.
- 4) The annual service recharge is £146,000. Position as at 30/11/2020 = £109,500 which would equate to 75%.
- 5) Roding Valley Recreation Ground year to date Expenditure figure is £22,778 Position as at 31/12/2020 including the DSO grounds maintenance contract is £121,381. Which would equate to 81.5% of Budget.
- 6) Willingale Road and Roding Valley Recreation Ground, Playing Field's income for the football season pitch hire is normally paid in advance but due to Covid 19 closure and the inclement weather very few Football Pitches have been hired.
- 7) Open Spaces year to date Expenditure figure is £8,359. Position as at 31/12/2020 including DSO grounds maintenance contract is £21,863 which would equate to 84.9%.

Agenda item 19
Financial Position - continued**Earmarked Reserves:**

A summary of the Committee's reserves showing the amounts available from reserves in this current financial year is provided below.

Schedule of Earmarked Reserves	
	24.2.21
Recreation Committee	
Murray Hall/Kingsley Hall	51,000
Roding Valley Recreation Ground	110,000
Playgrounds	34,000
Van replacement	9,000
Charles Moules Bridge	15,000
Total	219,000